

AKP / GSB

External CNC Gap Grinder
Internal CNC Grinder



HIGH PERFORMANCE

GRINDING

SPECIAL GRINDING MACHINES

for AEROSPACE

THE NEW CHALLENGE

AZ spa offers Internal and External CNC Grinders customized for aerospace landing gear manufacturing applications. Key features of these grinders include: 3 separate bases on AKP External CNC Gap Grinder and 2 bases on GSB Internal CNC Grinder.

Bases are made of high resistance cast iron, thermally stabilized. With one flat and one "V" guide. Surface are scraped in order to secure the highest precision of linearity and flatness.

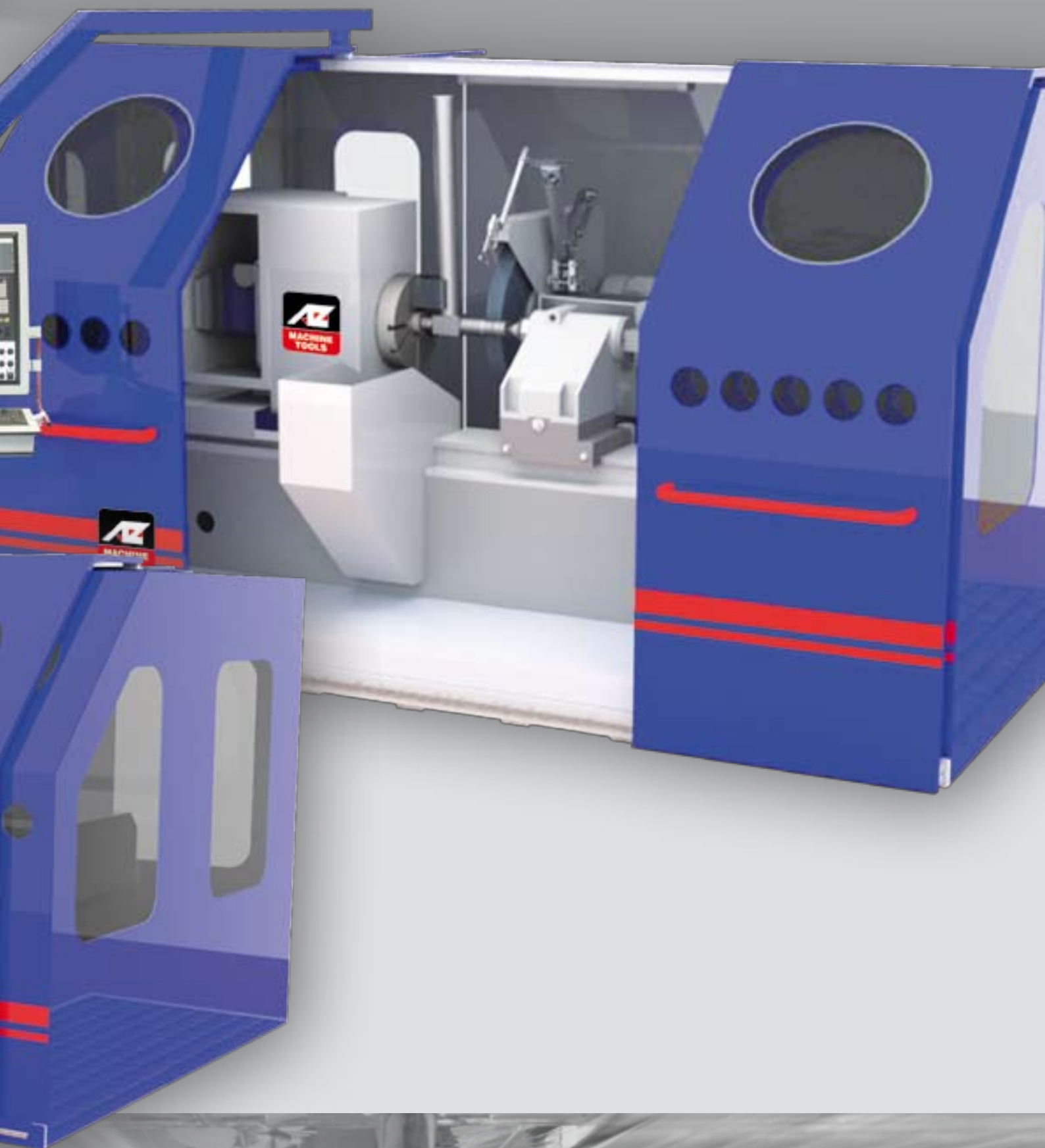
AKP

**EXTERNAL
CNC Gap Grinder**

GSB

**INTERNAL
CNC Grinder**







THE NEW CHALLENGE

AKP External CNC Gap Grinder

Wheelhead unit

Strong structure, cast iron and thermally stabilized, with scraped surface in order to secure the highest precision of linearity and flatness in the different positions of the grinding wheel head.

Workhead and tailstock unit

Workhead and tailstock are made of highly resistance cast iron.

Workhead spindle is fitted up with high precision ball bearings.

Spindle rotation is supplied by a variable-frequency brushless motor.

Workhead spindle speed of rotation is controlled by the CNC.

OD Grinding

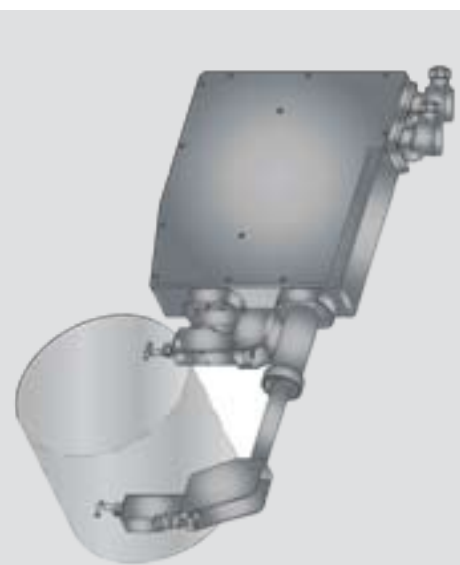
The spindle is designed to work without any need of lubrication for several years under full employment.

Wheel spindle rotation is controlled by the CNC.



AKP

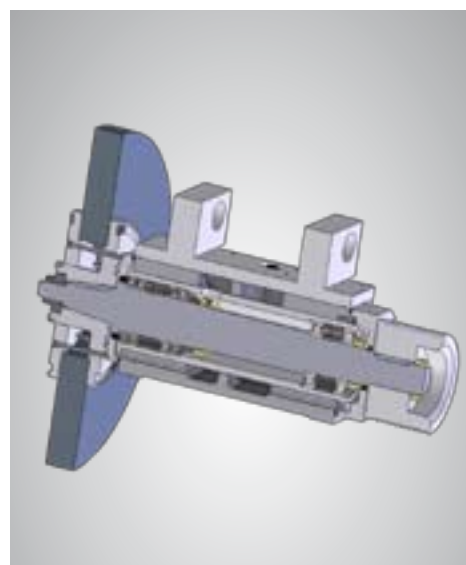
External CNC Gap Grinder



Measuring system



Control panel



Grinding wheel

0.4

	AKP CNC GAP GRINDER		unit
CAPACITIES			
Swing over bed	1000		mm
Swing over gap with open gap	2600		mm
Distance between centers with open gap	2486		mm
TECHNICAL SPECIFICATIONS			
Driving power of main motor	25		KW
Workpiece speed range	from 0 to 180		rpm

VASCOR

THE NEW CHALLENGE

GSB Internal CNC Grinder

Steady rest

The machine is supplied with 1 steady rest to support the piece during the ID grinding.

The steady rest opens in the upper part to permit an easy loading of the workpiece.

Various versions could be provided based on the customer's part diameter requirements.

Grinding wheel spindles

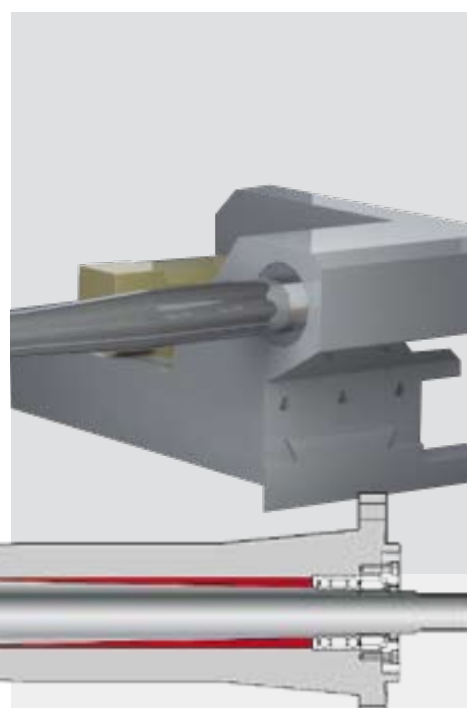
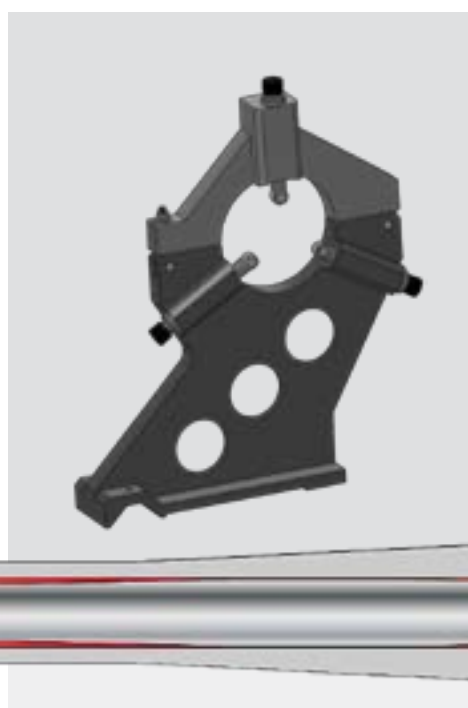
Different grinding wheel spindles can be easily placed on wheelhead unit to satisfy different grinding diameters and/or different grinding length.

The machine can grind blind holes with special shape grinding wheel.



GSB

Internal CNC Grinder



0.6

	GSB CNC ID GRINDER	unit
CAPACITIES		
Swing over bed or gap	900	mm
Maximum length of component	1800	mm
TECHNICAL SPECIFICATIONS		
Driving power of main motor	25	KW
Workpiece speed range	from 0 to 200	rpm

- R&D from 1953
- established in 1957
- over 50 year of know-how in the field of grinding machines
- leader of crankshaft manufacturing
- headquarters and factory located near Venice
- quality qualified ISO9001-2008
- 90% export



AZ spa

via dell'Electronica, 20 36016 THIENE (VI) ITALY
tel +39 (0) 445575543 fax +39 (0) 445575756
email info@azspa.it website www.azspa.it

